

EXCLUSIVE
HIRE



BYRON HALL & MASEFIELD SUITE

TRULY BLANK CANVAS AND FLEXIBLE VENUES FOR YOUR SPECIAL DAY

WELCOME

Congratulations on your forthcoming wedding!

If you're searching for a flexible and versatile venue with the necessary licenses, superb transport links and a range of affordable function rooms then look no further.

We understand that every wedding is unique, which is why our experienced events team listen to your bespoke requirements, helping make your dream day a reality.

We cater for all communities, sizes and budgets and have the vision and contacts to ensure every last detail makes for an unforgettable wedding day for you and your guests.





WEDDING RECEPTIONS

We have three function spaces ideal for wedding receptions of all sizes.

BYRON HALL

With room for up to 1,700 guests, the Byron Hall is one of the largest pillar-less event spaces in West London. It's a blank canvas and has a dedicated entrance, fully licensed bar, kitchen and cloakroom.

MASEFIELD SUITE

The Masefield Suite is ideal for more intimate receptions. There's a kitchen, fully licensed bar and room for 300 people in a theatre-style layout or 200 guests seated at banquet tables.

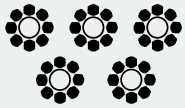
CONNECTING ROOM

Serving as an ancillary to ceremonies and receptions in the Masefield Suite or a venue in its own right, the Connecting Room has capacity for 80 people, a fully licensed bar and kitchen facilities.



BYRON HALL

Capacities



Banquet style: 800



Cabaret style: 400



Theatre style: 1700



Standing: 1800

Dimensions

Length - 44m

Width - 40m

Height - 3.6m (beams start)

Power

Numerous 13 amp sockets

3 Phase - 63 amp / 380-415 voltage

Staging

Length - 9.7m

Width - 7.3m

Height - 0.9m

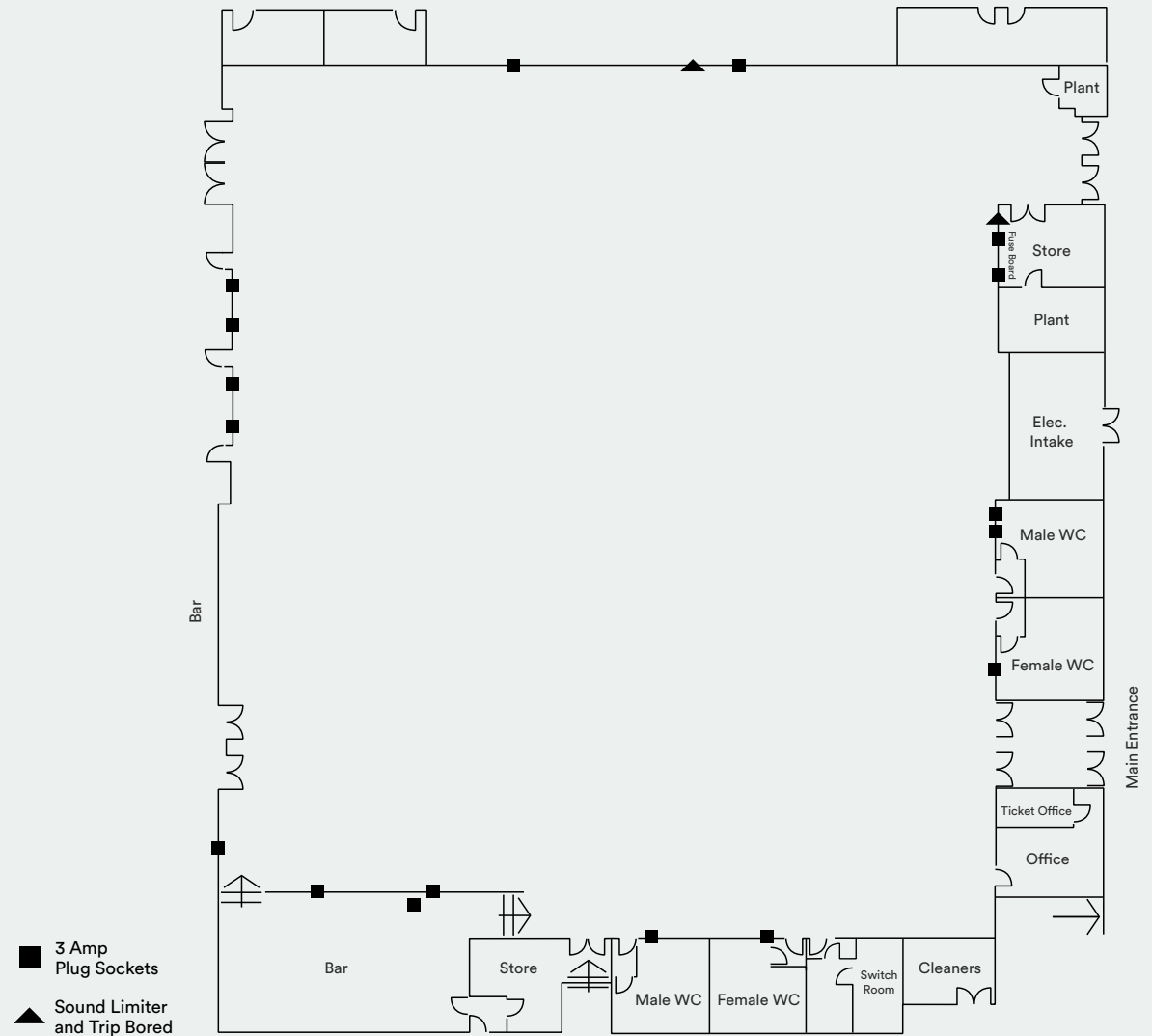
Tables

Round (seats 10) x 75 Trestle x 10

Chairs

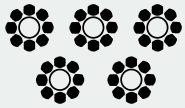
Folding x 600

Banquet x 60



MASEFIELD SUITE

Capacities



Banquet style: 200



Cabaret style: 100



Theatre style: 300



Standing: 300

Dimensions

Length - 18.6m

Width - 14m

Height - 4m

Power

Numerous 13 amp sockets

3 Phase - 63 amp / 240-415 voltage

Staging

Length - 3.7m

Width - 2.4m

Height - 0.3m

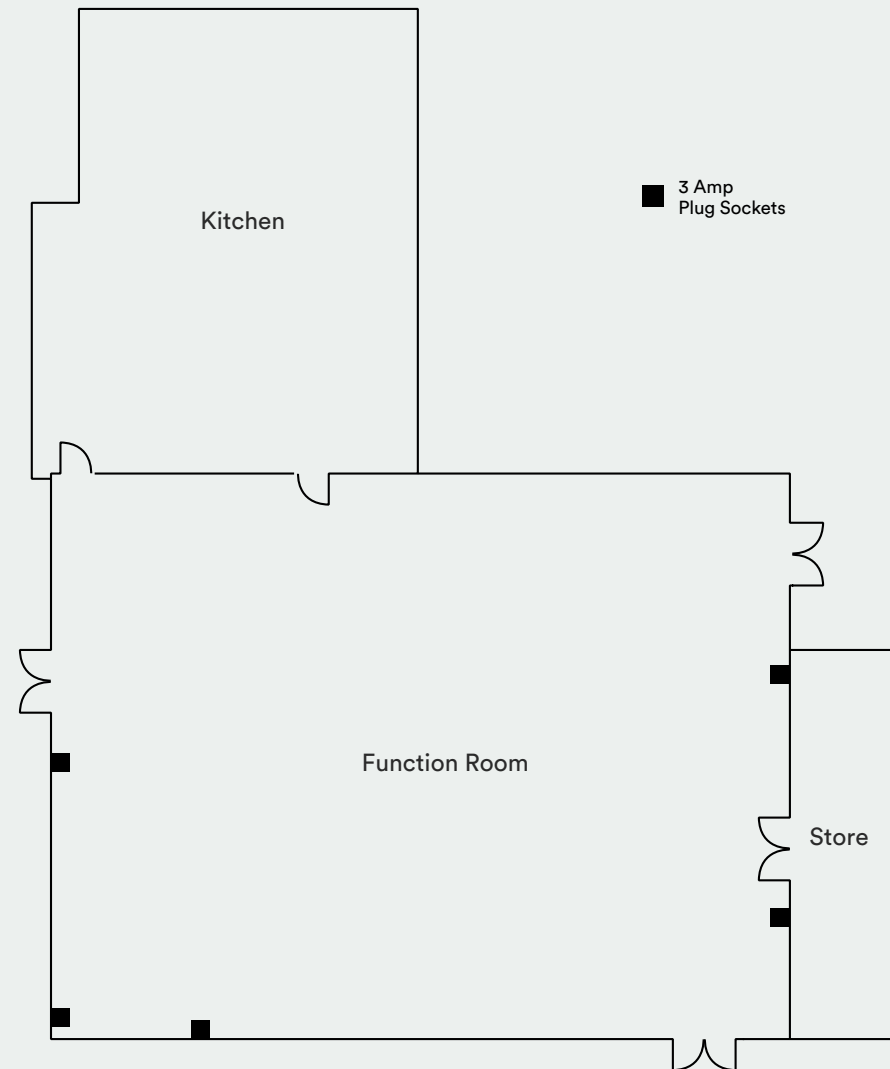
Tables

Round (seats 10) x 25 Trestle x 10

Chairs

Folding x 300

Banquet x 30





CATERING

We have a wealth of fully-customisable menus for you to choose from and a trusted network of caterers. Flexibility is the name of the game and that's why we also offer dry-hire.

LOCATION

Harrow Leisure Centre is a short distance from the M25, M40, M1 and A1. Harrow and Wealdstone train station is only a five minute walk with regular trains from London Euston taking just 12 minutes.

Harrow Leisure Centre
Christchurch Avenue,
Harrow, HA3 5BD

CAR PARKING

The facility has 450 car parking spaces.

ACCESS

There is a loading area with direct access to the Byron Hall.