



# SEYMOUR

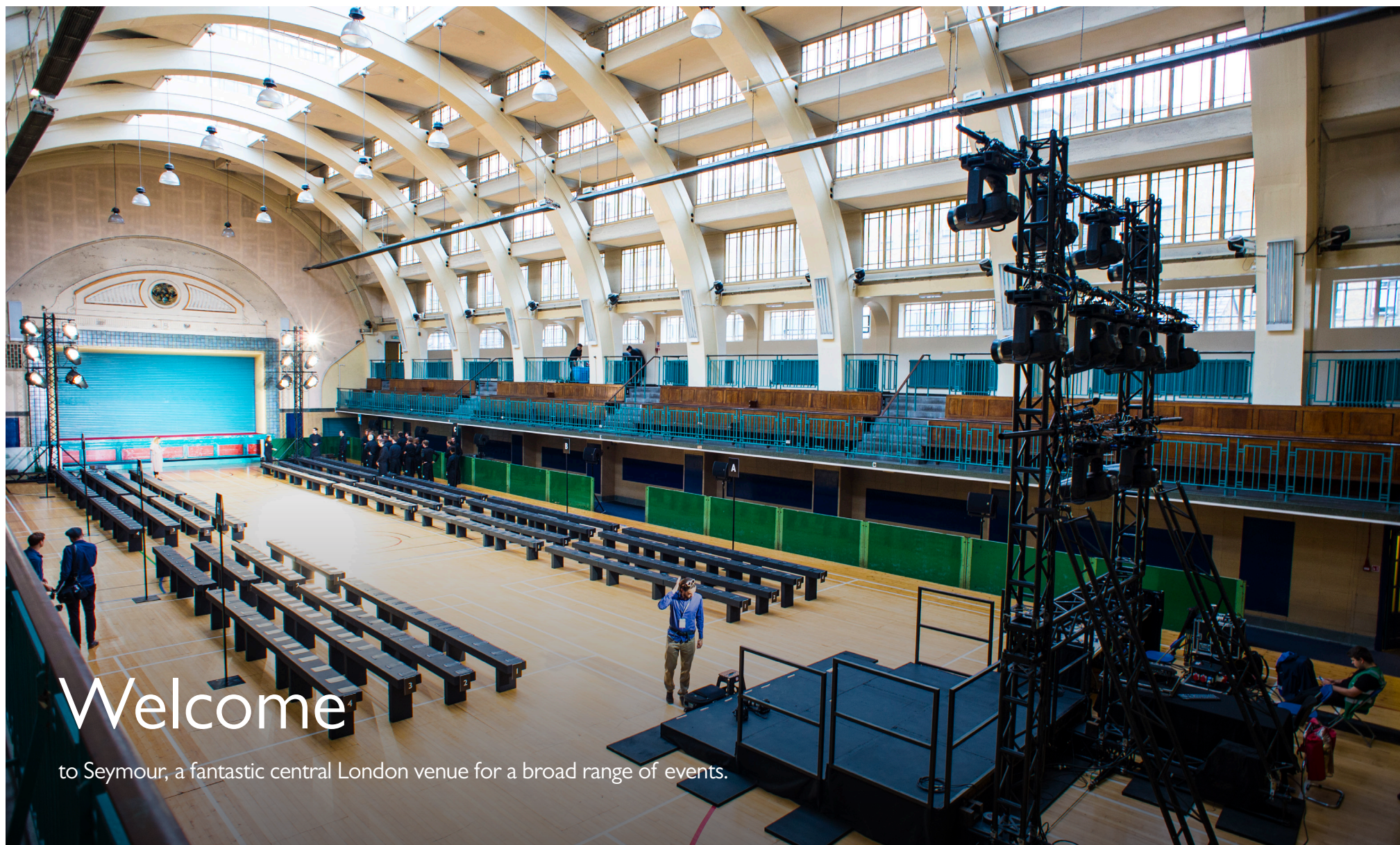
**EVERYONE  
EVENTS**

everyone  
ACTIVE

  
City of Westminster

[www.everyoneevents.com](http://www.everyoneevents.com)





# Welcome

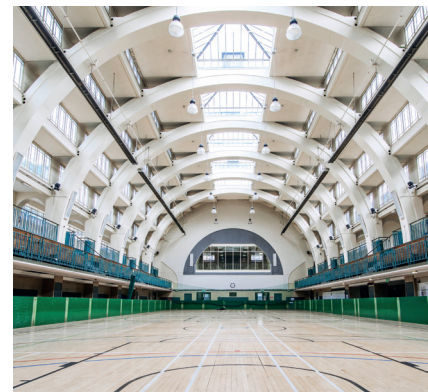
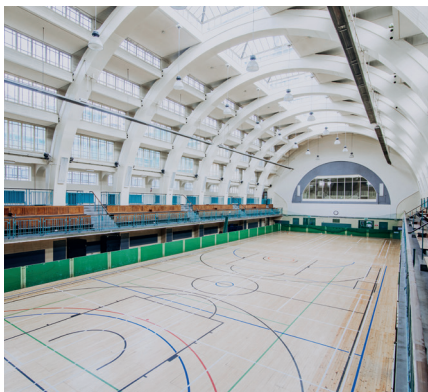
to Seymour, a fantastic central London venue for a broad range of events.

Tel: 0333 0050 112 • Email: [seymourevents@everyoneactive.com](mailto:seymourevents@everyoneactive.com) • [www.everyoneevents.com](http://www.everyoneevents.com)



# Main Hall

The pillarless main hall is spacious, light and highly versatile. You can host up to 1200 people using the tiered balconies. The 1930s features add a touch of glamour to proceedings, which explains why the venue is favoured for fashion shows by the likes of Vivienne Westwood, Jimmy Choo and Hunters Original.



# Main Hall

## Plans, dimensions & specifications

### Dimensions

Length – 42.6m

Width – 15.24m

### Capacity

Main hall – 900

Balconies – 300

### Power

2 x 125amp 3phase

C Form sockets

### Floor load limit

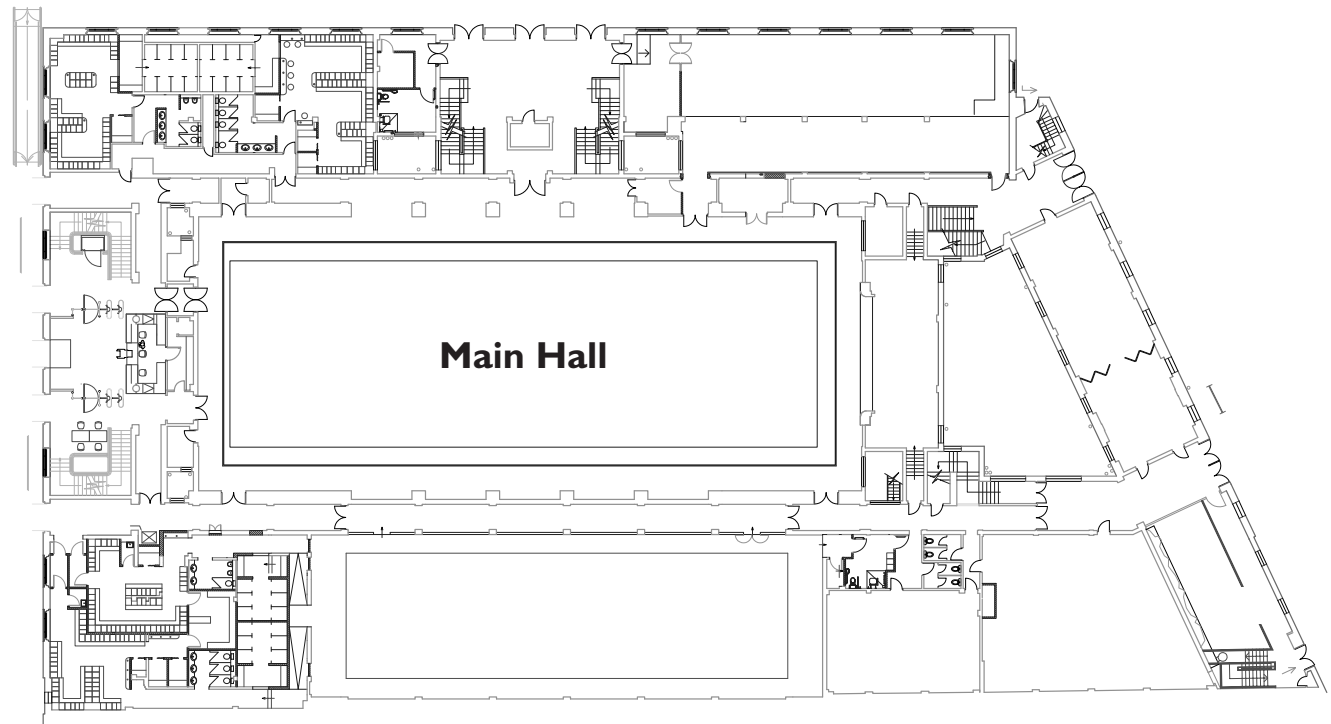
½ a ton per square meter

### Chairs

300 tiered on balconies

### Access

Loading permitted between 09:30 – 21:00



\*Additional due-diligence check may be required\*

Tel: 0333 0050 112 • Email: [seymourevents@everyoneactive.com](mailto:seymourevents@everyoneactive.com) • [www.everyoneevents.com](http://www.everyoneevents.com)











# Meeting Room

## Dimensions & Specifications

The modern meeting room seats up to 50 and comes with a range of catering options which can be tailored to your needs.

### Dimensions

Length – 10m

Width - 5m

Height – 3m

### Capacity

Maximum – 50

Theatre - 40

Boardroom - 16

### Power

4 x double

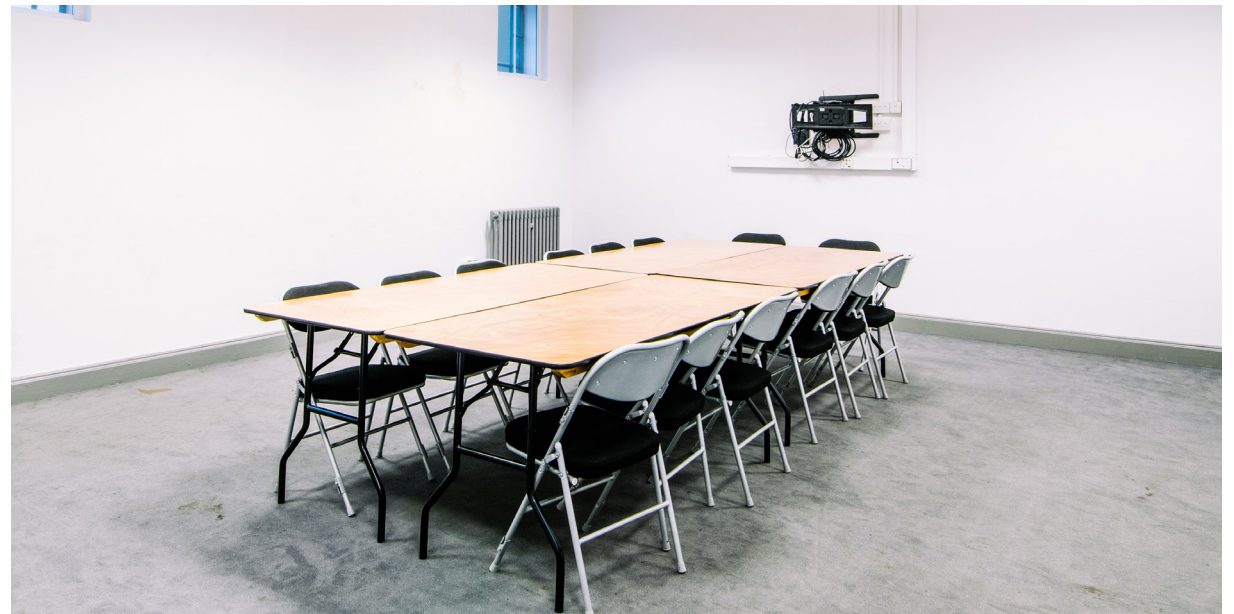
32amp sockets

### Equipment

Trestle tables x 16

Desks x 20

Chairs x 20



\*Quantities may vary\*

Tel: 0333 0050 112 • Email: [seymourevents@everyoneactive.com](mailto:seymourevents@everyoneactive.com) • [www.everyoneevents.com](http://www.everyoneevents.com)



# Testimonials

“We would like to say a huge thank you for all of your help on the Vivienne Westwood SS18 Show.

It was such a pleasure to work with you. Thank you for looking after us and helping all the way through! It was great to work with you and the venue.”

“Thank you all so much for everything you did to help us deliver the show, it was a great success and a great venue!”

## Location

Seymour is sited in Marylebone, within walking distance of Marylebone station, as well as Edgware Road, Baker Street and Marble Arch tube stations.

### **Seymour Leisure Centre**

Seymour Place  
London  
W1H 5TJ

