



# HARROW LEISURE CENTRE

EVERYONE  
EVENTS

everyone  
ACTIVE

Harrow COUNCIL  
LONDON

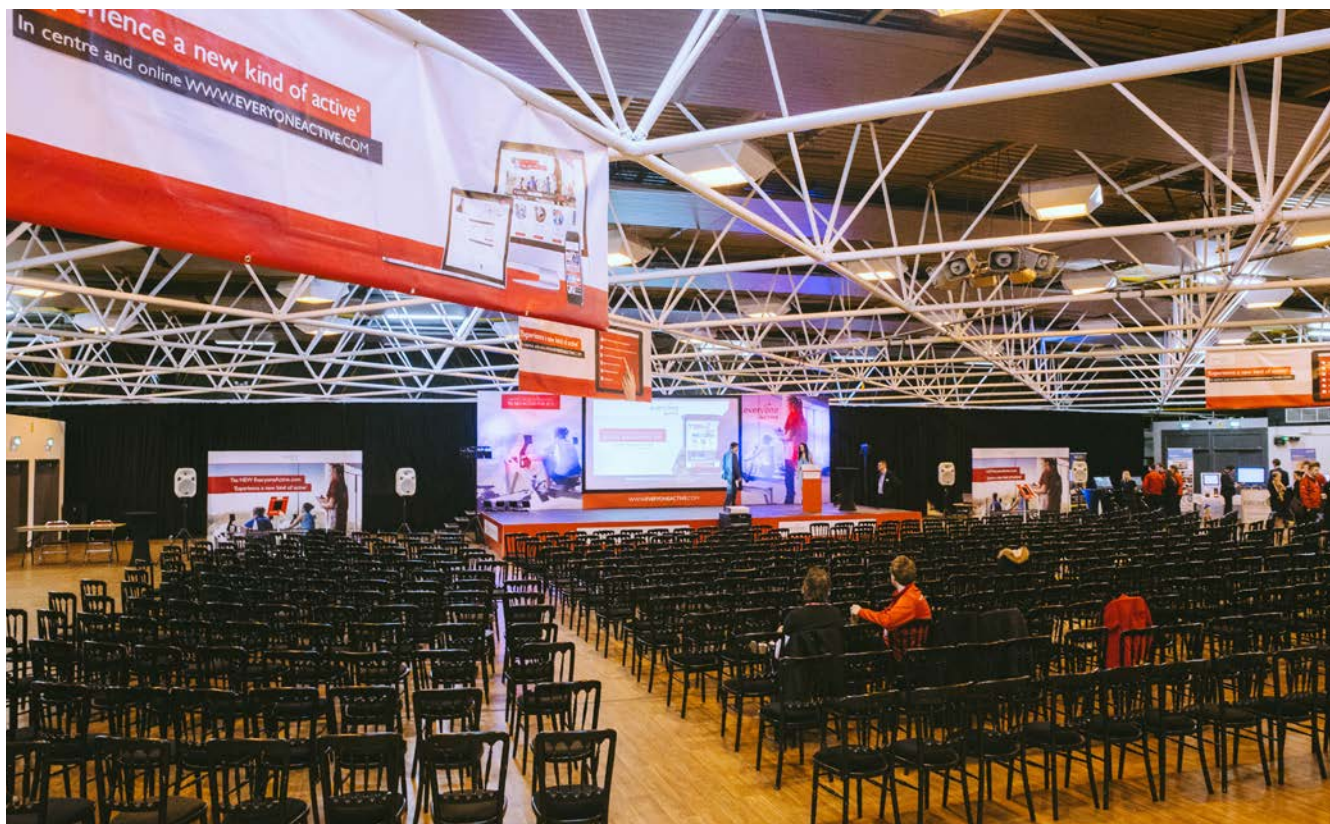
[www.everyoneevents.com](http://www.everyoneevents.com)



# Welcome

If you're searching for a flexible and versatile event venue with superb transport links and a range of affordable function rooms then look no further. Harrow Leisure Centre offers both the capacity and class to cater for any occasion.

Whether it's a sporting event, corporate meeting, community gathering, wedding, examination or private party, our team have the knowledge and nous to meet your every requirement.



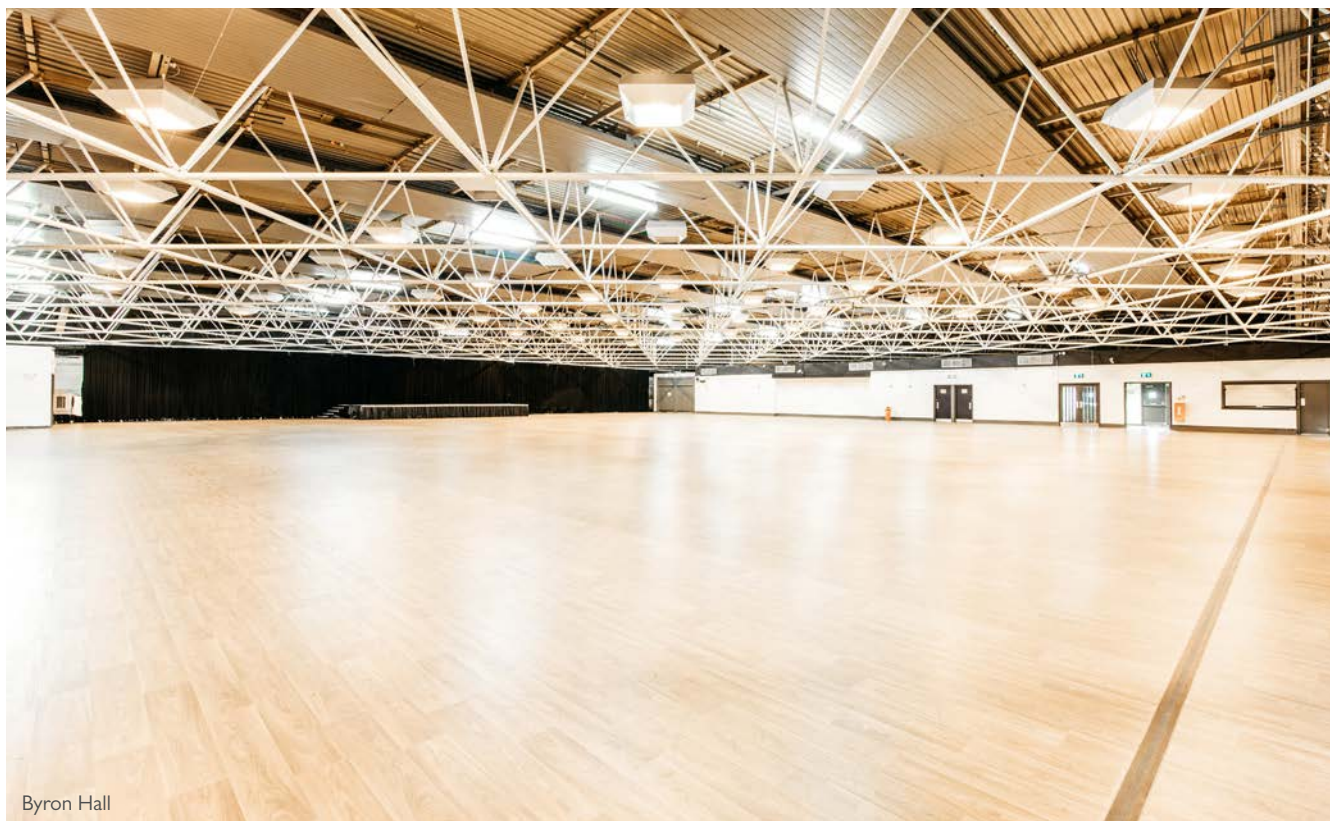


# Byron Hall

The Byron Hall is a blank canvas that lends itself to any occasion. With capacity for up to 1,800 people standing and 800 guests in a banquet-style set up, it's one of the largest pillar-less event spaces in West London. It has a dedicated entrance, fully licensed bar, kitchen, cloakroom and ticket station.

# Masefield Suite

The Masefield Suite is ideal for more intimate events such as parties, dinners and community activities. There's a kitchen, fully licensed bar and room for 300 people in a theatre-style layout or 200 guests seated at banquet tables.



Byron Hall



Masefield Suite

# Sports Hall

Holding up to 1,400 people standing or 600 seated, our sleek sports hall is ideal for sporting and community events. This can be hired individually or combined with Arena 3, which is adjacent to the main hall, for those requiring extra space.

# Conference Room

Serving as an ancillary to functions in the Maselfield Suite or a venue in its own right, the Conference Room has capacity for 80 people, a fully licensed bar and kitchen facilities.



Sports Hall



Conference Room

# Byron Hall

Plans, dimensions and specifications.

## Capacities



Banquet style: 800



Cabaret style: 400



Theatre style: 1700



Standing: 1800

## Dimensions

Length - 44m

Width - 40m

Height - 4.2m (beams start)

## Power

Numerous 13 amp sockets

3 Phase – 63 amp / 380-415 voltage

## Staging

Length - 9.7m

Width - 7.3m

Height – 0.9m

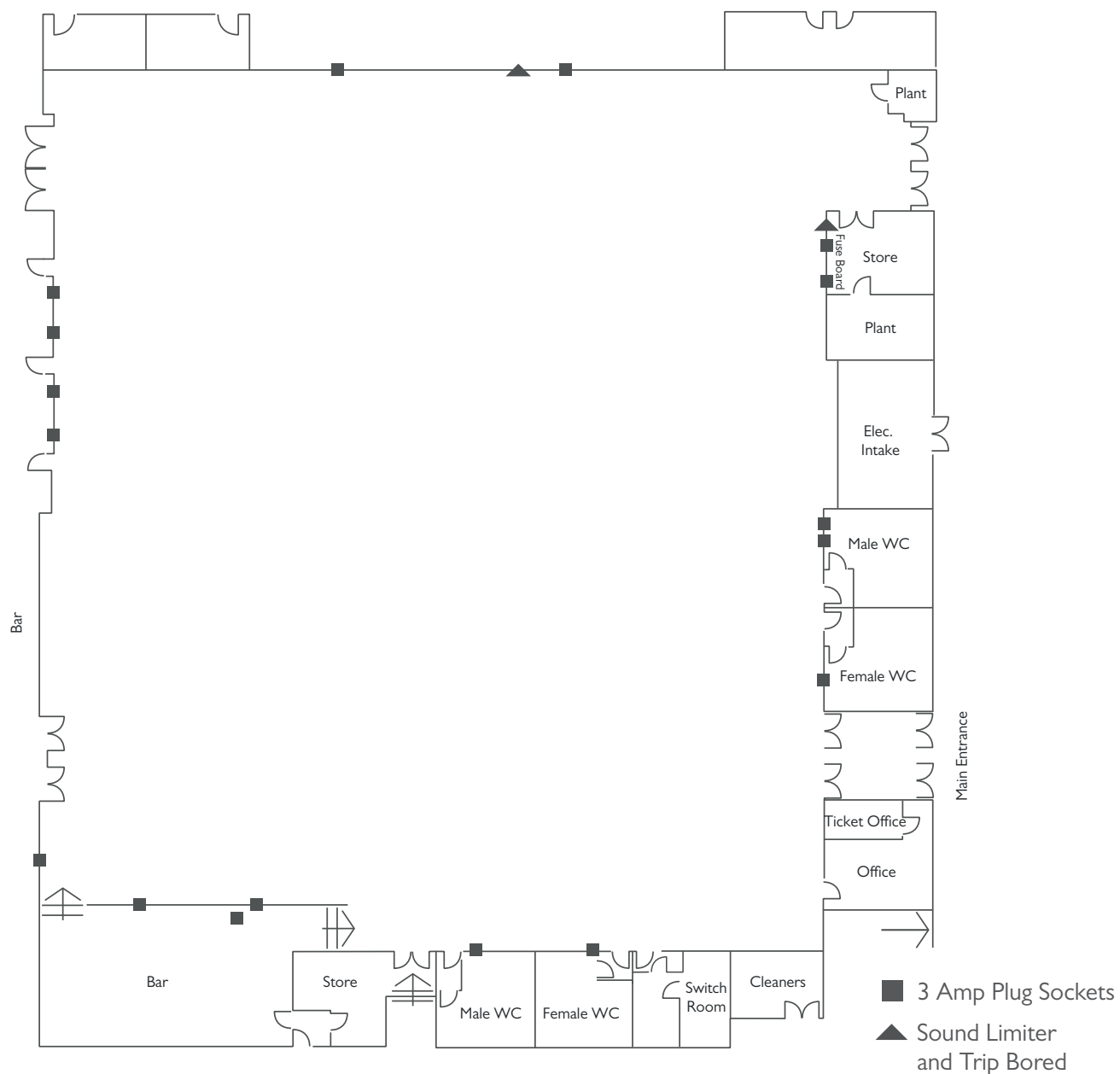
## Tables

Round (seats 10) x 75    Trestle x 10

## Chairs

Folding x 800

Banquet x 80





# Masefield Suite

Plans, dimensions and specifications.

## Capacities



Banquet style: 200



Cabaret style: 100



Theatre style: 300



Standing: 300

## Dimensions

Length - 18.6m

Width - 14m

Height - 4m

## Power

Numerous 13 amp sockets

3 Phase – 63 amp / 240-415 voltage

## Staging

Length - 3.7m

Width - 2.4m

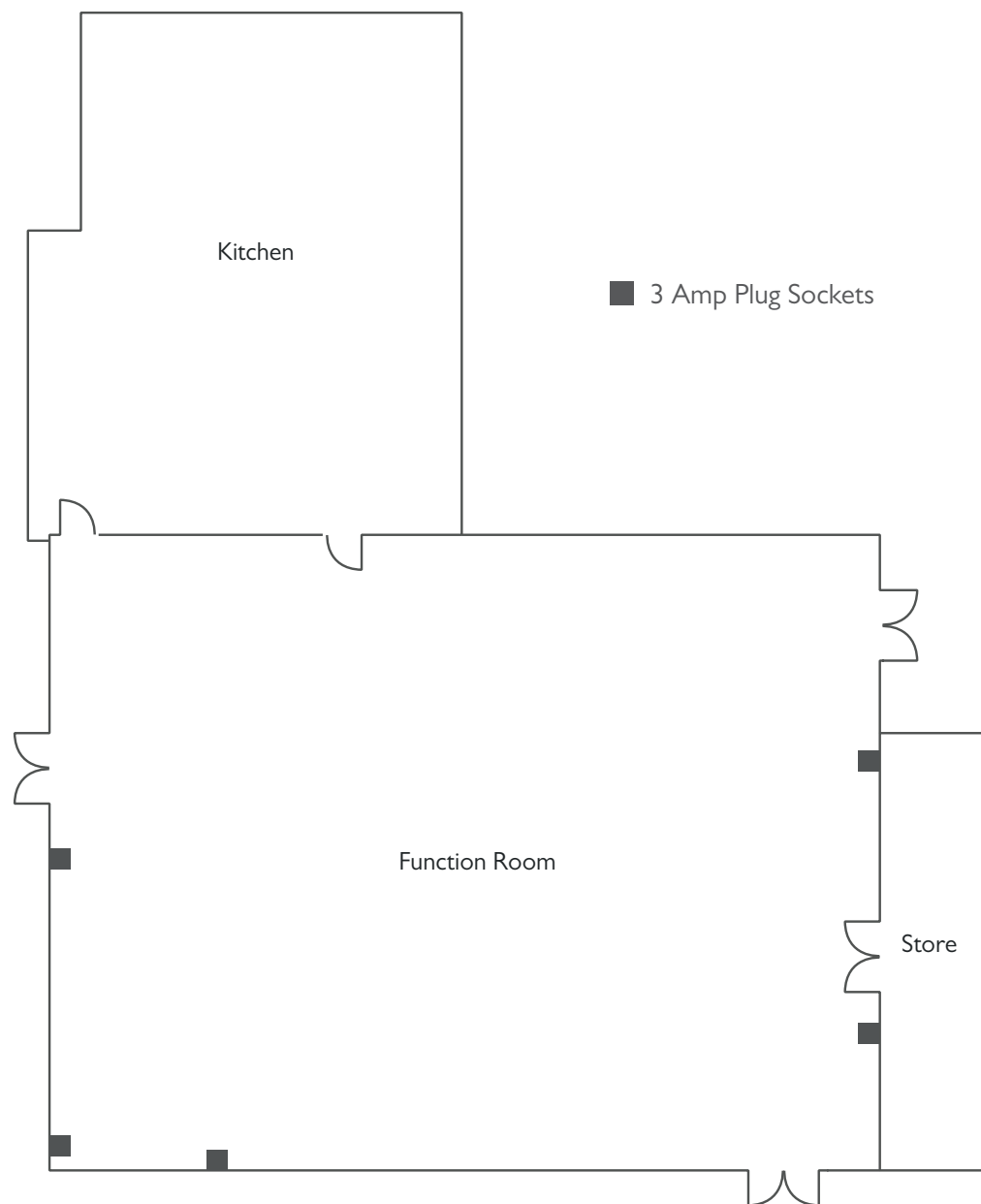
Height - 0.3m

## Tables

Round (seats 10) x 25 Trestle x 10

## Chairs

Folding x 300 Banquet x 30



# Sports Hall

Plans, dimensions and specifications.

## Capacities



Banquet style: 600



Cabaret style: 350



Theatre style: 1500



Standing: 1500

## Dimensions

Length – 32m

Width – 36m

Height – 11.5m

## Power

Numerous 13 amp sockets

3 Phase x 2

1 x 63 amp / 200-346 voltage or 380-415 voltage

1 x 32 amp / 380-415 voltage

## Staging

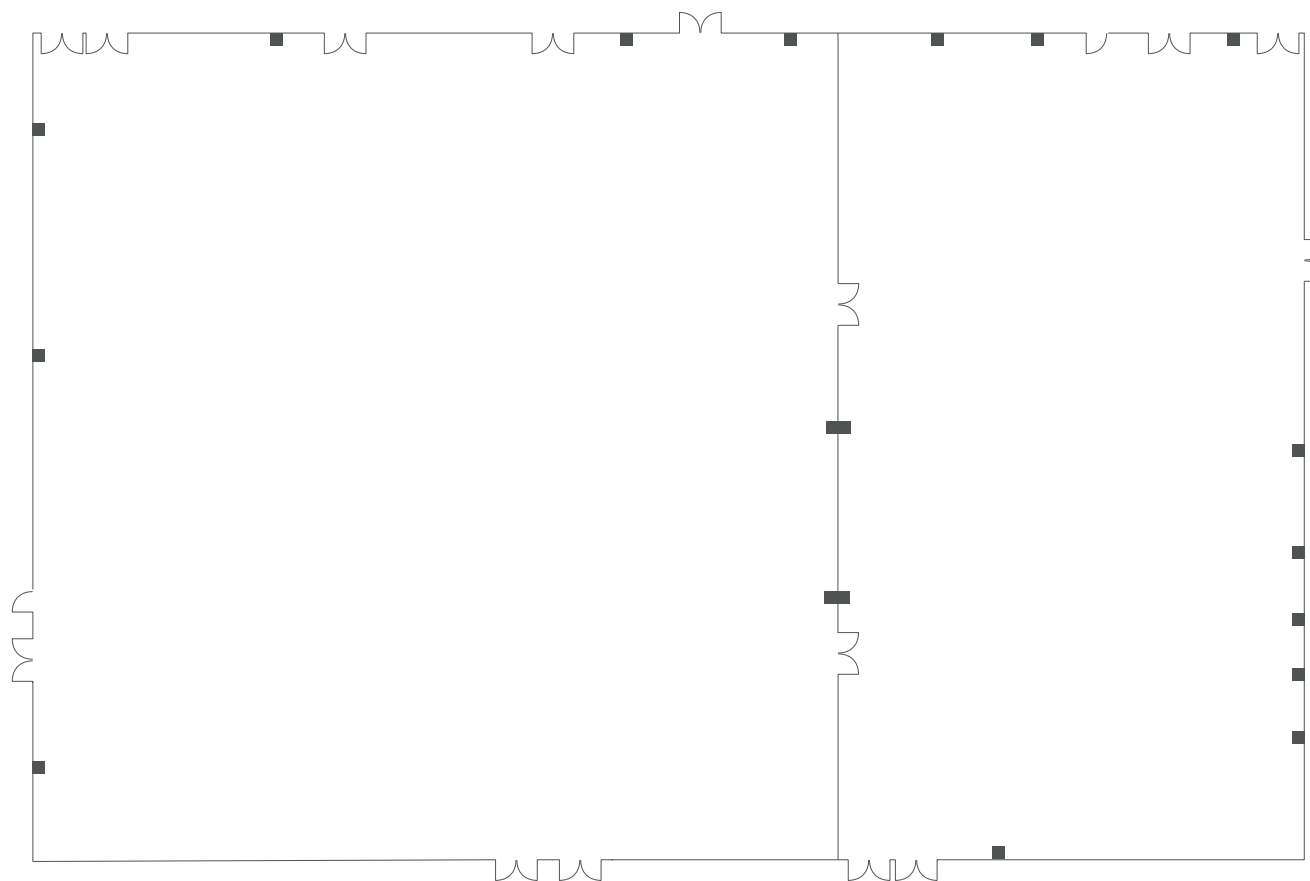
Length - 9.7m

Width - 7.3m

Height – 0.9m

Table and chair numbers available on request

■ 3 Amp Plug Sockets



## Location

Harrow Leisure Centre is a short distance from the M25, M40, M1 and A1. Harrow and Wealdstone train station is only a five minute walk with regular trains from London Euston taking just 12 minutes.

Harrow Leisure Centre,  
Christchurch Avenue, Harrow, HA3 5BD

## Car parking

The facility has 450 car parking spaces.

## Access

There is a loading area with direct access to the Byron Hall and Sports Hall.

## Availability

Our function rooms are available to hire seven days a week from:

06:30-23:00 Monday to Thursday

06:30-00:00 Friday to Sunday

An extension to closing times may be available on request.

