



Surrey Docks Fitness and Watersports Centre

Welcome

With picturesque views of the Thames and Canary Wharf, coupled with unique watersports facilities, Surrey Docks Fitness and Watersports Centre makes the ideal venue hire for all manner of events.

Club Room and Terrace

The light and airy club room - which has capacity for 60 people - has large windows and doors opening directly onto the terrace, making it popular for summer gatherings and drinks receptions, as well as corporate meetings and away days.

There's an adjoining kitchenette, or catering can be provided tailored to your taste and budget.



Team building days

Our flexible full and half day team building packages give groups the opportunity to try their hand at sailing, windsurfing, canoeing, kayaking, powerboating, raft building, dragon boat racing and rowing in a safe and fun environment.

Just 15 minutes from Canary Wharf via river boat, Surrey Docks is perfect for away days with a twist.



Club Room - Plans, dimensions and specifications

Capacities



Banquet style: 42



Cabaret style: 30



Theatre style: 50



Standing: 60

Dimensions

Length - 10.3m

Width - 5.1m x 10.3m

Height - 2.6m

Power

Numerous 13 amp sockets

Tables

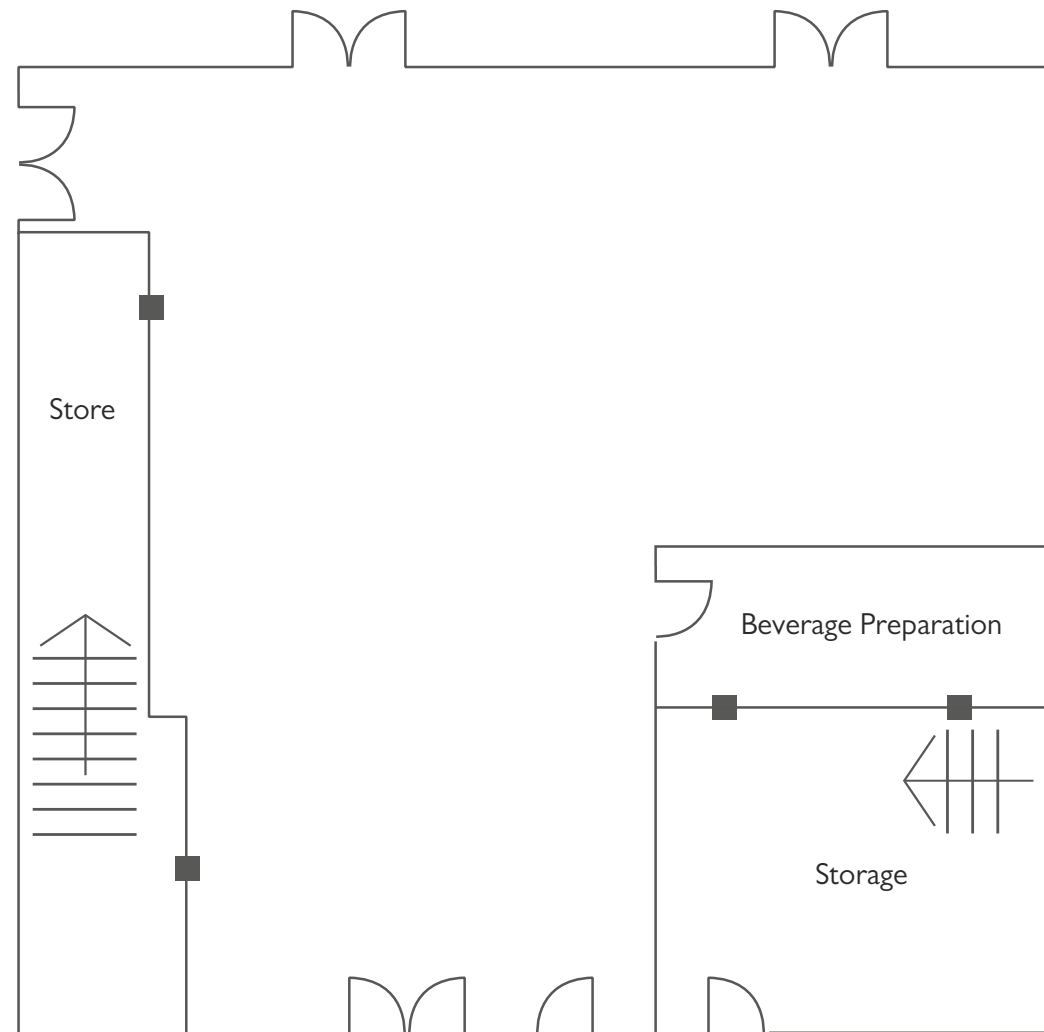
Trestle x 5

Chairs

Stacking x 50

WiFi

WiFi access is included.



■ 3 Amp Plug Sockets

Location

Surrey Docks Fitness and Watersports Centre is in close proximity to Canada Water and Surrey Quays stations, as well as the River Bus (Greenland Pier).

Surrey Docks Fitness and Watersports Centre, Rope Street (off Plough Way), Greenland Dock, Rotherhithe, London, SE16 7SX.

Car parking

Free car park with 50 spaces.

Contact us

Tel: 07740 535 591

Email: surreydocksevents@everyoneactive.com

www.everyoneevents.com

